

LAND USE ZONING MAP

- Land Use Zone**
- CG - Commercial General
 - CM - Commercial Main Street
 - CN - Commercial Neighbourhood
 - C/LI - Commercial/Light Industrial
 - CDA - Comprehensive Development Area
 - IG - Industrial General
 - CON - Conservation
 - OSB - Open Space Buffer
 - OSR - Open Space Recreation
 - PMD (COM) - Planned Mixed Development (Commercial)
 - PMD (RES) - Planned Mixed Development (Residential)
 - PU - Public Use
 - Q - Quarry
 - RLD - Residential Low Density
 - RMD - Residential Medium Density
 - RHD - Residential High Density
 - RMH - Residential Mini Home
 - RM - Residential Mixed
 - RSA - Residential Subdivision Area
 - RWS - Residential Watershed
 - RURAL - Rural
 - RR - Rural Residential
 - RRC - Rural Residential Conservation
- Transportation Hierarchy**
- T-Railway
 - Trails
 - East Coast Trail
 - Arterial
 - Collector
 - Local
 - Future Connections
 - Limit of Street

1:12,500 

METADATA
Date: 14/03/2018
Drawn by: JF
Coordinate System: NAD 1983 MTM 1
Projection: Transverse Mercator
Datum: North American 1983
False Easting: 304,800,000
False Northing: 0.0000
Central Meridian: -53.0000
Scale Factor: 0.9999
Latitude Of Origin: 0.0000
Units: Meter

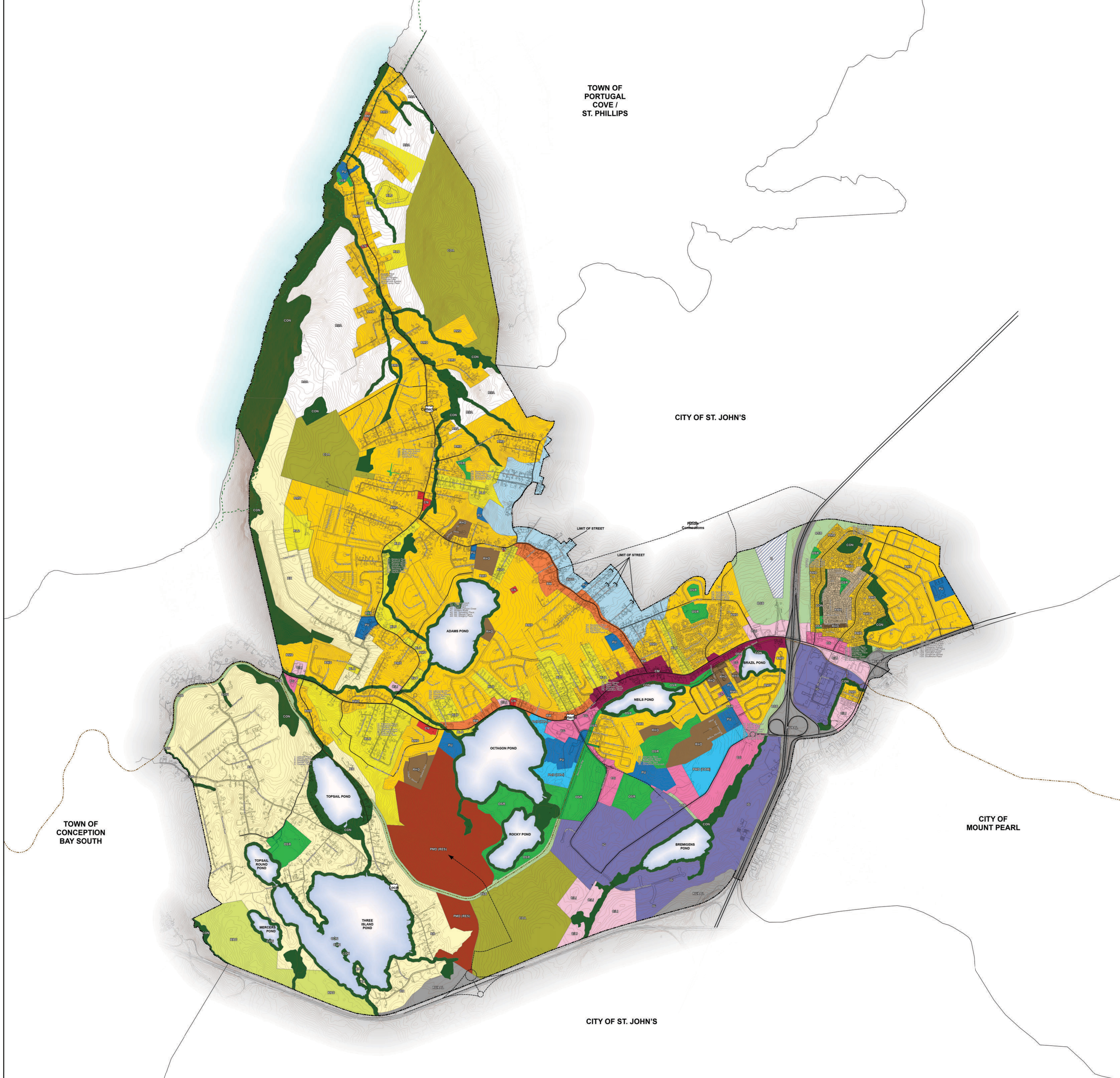
AMENDMENTS

MINISTER

TOWN AUTHORIZATION
Name, Mayor: _____
Name, Town Manager: _____
DAY MONTH YEAR

PROFESSIONAL CERTIFICATION
I certify that this Municipal Plan for the Town of Paradise has been prepared in accordance with the requirements of the Urban and Rural Planning Act, 2000.

Mary Bishop, FCIP
Senior Project Manager
187 Kenmount Road
St. John's, Newfoundland and Labrador
A1B 3P6
Email: maryb@tbl.ca
Phone: (709) 364-8623
Fax: (709) 364-8627



TOWN OF PORTUGAL COVE / ST. PHILLIPS

CITY OF ST. JOHN'S

TOWN OF CONCEPTION BAY SOUTH

CITY OF MOUNT PEARL

CITY OF ST. JOHN'S